

PRODUCT PORTFOLIO 2024

Our commitment is providing Quality Products and Solutions to our valued customers.



Our Values

Service Excellence
Customer Success
Results Driven
Integrity, Trust & Respect
Teamwork
Quality & Reliability

Shareholders



In September 2022, ADI Scientific (Pty) Ltd, operating under the trade name Advanced Laboratory Solutions, proudly commemorates 25 years of successful business. Founded by Alessandro Beccaro, David Perrett, and Iain Ramsay, our journey has been marked by a steadfast commitment to excellence.

As a leading laboratory and scientific equipment supplier, we have meticulously curated our portfolio to feature the most renowned brands in the industry. Our dedication to quality extends beyond the acquisition of top-tier products; we have consistently fortified our offerings with unparalleled after-sales application and technical support.



Calibration Accreditation

As a SANAS Accredited Laboratory ([Accreditation No: 827](#)). Advanced Laboratory Solutions can perform Force (up to 600 kN Tension / Compression), Speed (up to 500mm/min), Displacement (from 50mm to 1000mm), Strain Measurement (up to 50mm) and Hardness (Indirect Method - Rockwell & Vickers). Our facility is accredited in accordance with the recognised International Standard ISO / IEC 17025:2005 and meets all the technical competencies and laboratory quality management systems.

Metallurgical Sample Preparation

- Cutting
- Mounting
- Grinding
- Polishing
- Electrolytical Preparation
- Weld Analysis



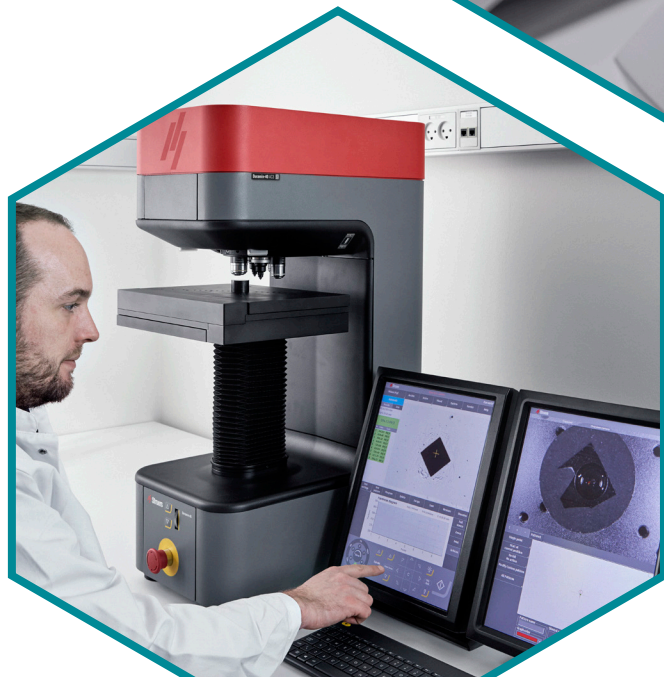
Mineralogical Sample Preparation

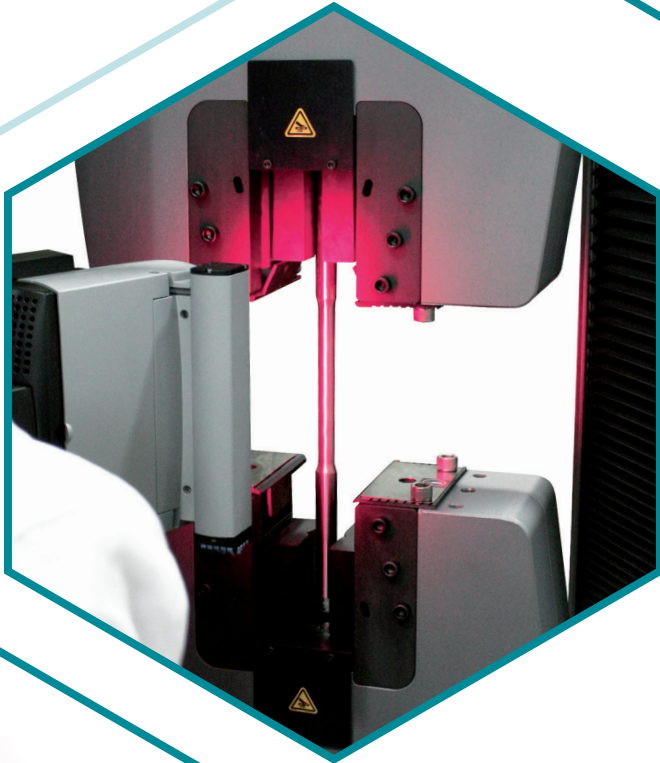
- Cutting
- Mounting
- Lapping and Grinding
- Vacuum Impregnation
- Thin Sectioning
- Polishing



Hardness Testing Equipment

- Rockwell
- Vickers
- Knoop
- Brinell
- Universal Hardness





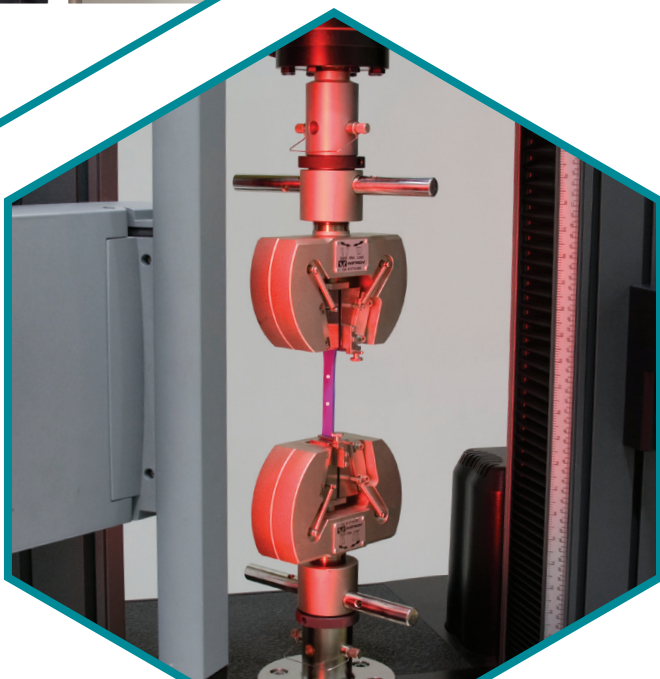
Metals Testing

- Tensile
- Strain Measurement
- Compression / Bend
- Fatigue Testing – HCF, LCF
- Fracture Toughness
- Impact



Plastics Testing

- Tensile / Compression
- Peel / Adhesion / COF
- Melt Flow / Rheology
- Impact
- HDT / Vicat
- Notching / Die Punch

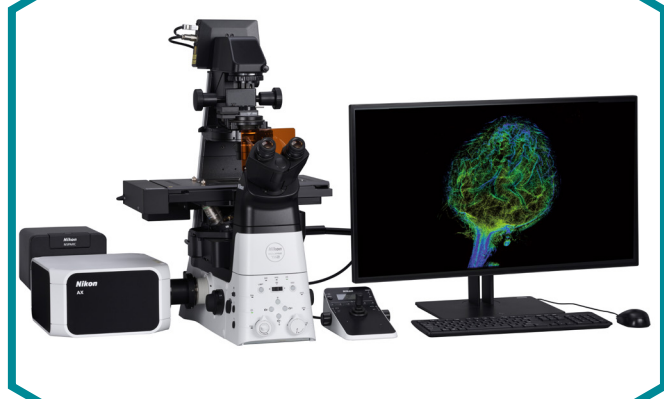


Composite Testing

- Tensile
- Shear
- Compression
- Bend
- Impact
- Fatigue / Fracture

Life Sciences

- Confocal and Multiphoton Microscopes
- Super-Resolution Microscopes
- Inverted Microscopes
- Cell Screening
- Photostimulation & TIRF
- Stereo Microscopes
- Cameras



Education

- Stereo Microscopes
- Upright Microscopes
- Inverted Microscopes
- Digital Cameras
- Teaching Heads
- Virtual Classroom Microscopy



Industrial

- Stereo Zoom Microscopes
- Metallurgical Microscopes
- Polarising Microscopes
- Measuring Microscopes
- Profile Projectors
- Video Measuring Systems



KRÜSS



Advanced Surface Science

- Force Tensiometers
- Bubble Pressure Tensiometers
- Drop Shape Analyser
- Dynamic Foam Analyser
- Interfacial Rheology
- Surface Analysis

TA
Instruments

Thermal Analysis

- Thermogravimetric Analyser
- Differential Scanning
- Calorimetry
- Simultaneous Thermal Analyser
- Dynamic Mechanical Analyser
- Vapour Sorption
- Thermomechanical Analyser



Research

- Rheometers
- Thermal Conductivity
- Dilatometers
- Flash Diffusivity
- Microcalorimetry
- Force Testers

Environmental Simulation

- Temperature Chambers
- Climatic Chambers
- Thermal Shock Chambers
- Stress Screening Chambers
- Vibration Test Chambers
- Walk-in Test Chambers



Measurement and Analysis

- Coatings Thickness
- Measurement
- Precious Metal Analysers
- Surface Coatings Analysis
- Electrical Conductivity
- Ferrite Content
- XRF Analysers

fischer®

Corrosion Protection

- Dew Point
- Surface Profile
- Salt Contamination
- Porosity Testing
- Nanoidentation
- Scratch Testing





+27 (0) 11 462-1363



+27 (0) 11 462 1466



info@advancedlab.co.za



www.advancedlab.co.za



370 Angus Crescent, Northlands Business Park,
29 Newmarket Road, Northriding, Randburg,
2169, South Africa

PO Box 71295 Bryanston 2021, South Africa

Branches: Johannesburg, Durban, Port Elizabeth, Cape Town

